

## Alsiflex® Female Reflective Tape Cargo Trousers

A reflective trouser has a modern twist with heatsealed chevron reflective tape leg bands.

Not only does it look great, but it washes at high temperatures too. Alsiflex® fabric is the ultimate combination of stretch, comfort and performance, made using certified sustainably sourced fibres.

## Specifications

**Style** RT11

**Fabric** 265gsm 79% Recycled & Renewable Polyester / 21% Cotton

### Garment Features

- Concealed stud button and zip fly front fastening
- Side elasticated waist for additional comfort
- Belt loops including large back loop
- Two (2) front hip pockets
- One (1) back hip pocket with concealed stud fastened pocket flap
- Two (2) angled side thigh pockets with concealed stud fastened pocket flaps. Angled for improved access and mobility
- Angled thigh leg seam detail
- Internal kneepad pocket with lower pocket access
- Twin banded chevron industrial launderable tape on lower legs

### Sizes Available

**Sizing:** 6, 8, 10, 12, 14, 16, 18, 20, 22, 24, 26

**Leg Lengths:** Regular 29" / Tall 31"

### Colours Available

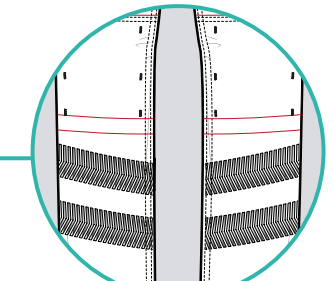
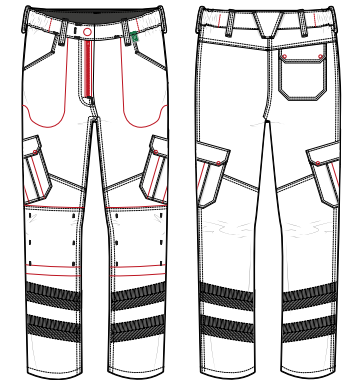
Blue Shadow

### Specification and Standards

For use in normal working environments where there are no specific protective clothing requirements.



ULTIMATE  
COMBINATION OF  
STRETCH, COMFORT  
AND PERFORMANCE



### KEY FEATURES

Twin banded chevron  
lower leg tape



Scan the QR code to discover how this fabric is the ultimate combination between stretch and sustainability