

Alsiflex® Male Kneepad Cargo Trousers

With multi layered thigh cargo pockets, hardwearing kneepad pockets and contemporary styling, these trousers offer the ultimate in function, design and fit.

Alsiflex® fabric is the ultimate combination of stretch, comfort and performance, made using certified sustainably sourced fibres.

Specifications

Style RT16

Fabric 265gsm 79% Recycled & Renewable Polyester / 21% Cotton

Garment Features

- Concealed stud button and zip fly front fastening
- Side elasticated waist for additional comfort
- Belt loops including large back loop
- Two (2) front hip pockets
- Two (2) angled back hip welt pockets
- Two (2) angled side thigh pockets with concealed stud fastened pocket flaps and multiple pockets
- External self fabric pillowcase style kneepads suitable for most sizes of kneepads
- Self fabric bottom access kneepad pockets

Sizes Available

Waist Sizing: 30", 32", 34", 36", 38", 40", 42", 44", 46"

Leg Lengths: Short 29" (30"- 42"), Regular 31" / Tall 33"

Colours Available

Black

Blue Shadow

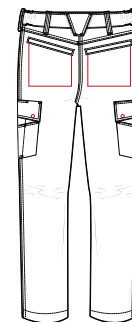
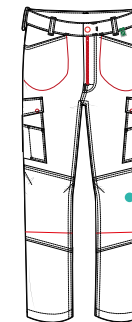
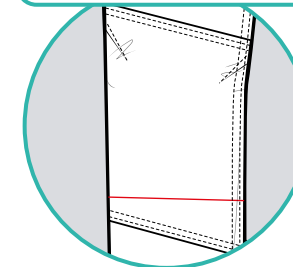
Convoy Grey

Specification and Standards

For use in normal working environments where there are no specific protective clothing requirements.

KEY FEATURES

External self fabric pillowcase style kneepads



Scan the QR code to discover how this fabric is the ultimate combination between stretch and sustainability